

# XO PENTHOUSES

The XO Residences Palma



# 01. THE PREMIUM COLLECTION

The penthouses benefit from spectacular private roof terraces equipped with pool or jacuzzi and barbecue areas with In-ground planting, designed for privacy featuring views over charming Portixol.





# 02. OUR LOCATION NOU LEVANT







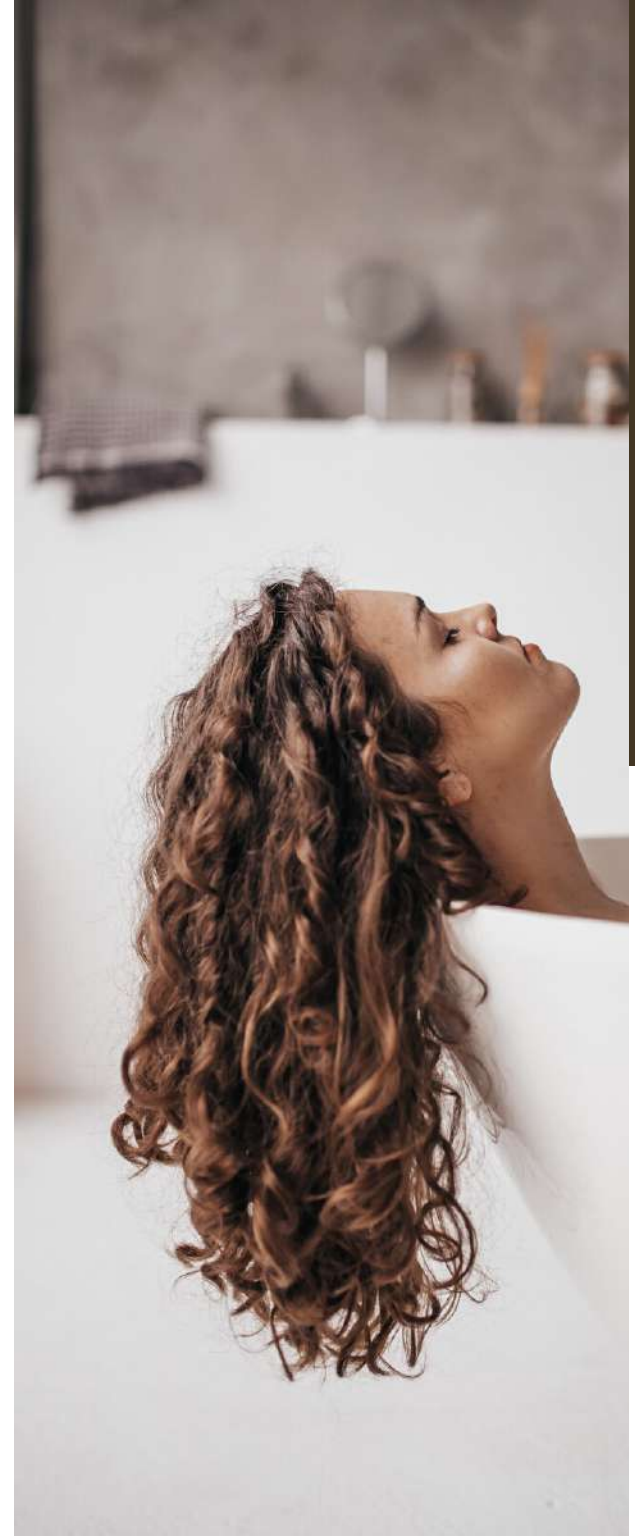
# 03.

## PRIME FEATURES

---

- Penthouse includes private rooftops terraces
- Private pools & jacuzzis
- Outdoor kitchen & barbecue\*
- Exceptional views
- Outdoor showers
- Outdoor fire pit\*
- Extensive open space and bedrooms en-suite
- Sunbeds\*
- Sunroof\*
- Outdoor cinema\*
- Outdoor speakers\*

\* in upgrade packages



X

The XO Residences Palma





# 04. YOUR INTERIOR CHOICE

We provide homeowners with complete and inspirational interior design lines that deliver an exceptionally beautiful space. The choice between the three lines creates unique properties which offer their own individual feel, using the finest quality materials.

## *Raw*

A dynamic blend of exposed and industrial, highly functional and durable concrete surfaces that fuse into a very stylish environment. Full of character with a hint of industrial flavour, bringing a subtle and sophisticated edge to your interiors.

## *Vanity*

Classic contemporary marble pairs with timeless warm parquets, giving your interior spaces a glamorous stamp of modernity, while adding a touch of elegance to your urban home.

## *Island*

White wooden surfaces embraced by creme tiling define the Mallorquin and Mediterranean style of this line. Minimalistic clean lines create maximum versatility for a bright and charming space, blended with organic moss walls that require no gardening.



**X**





# RAW PENTHOUSE

X





VANITY PENTHOUSE

X



# ISLAND PENTHOUSE

X



# 05. LAYOUTS

5AB. 397m<sup>2</sup> 3 bedrooms **SOLD**

5EF. 260m<sup>2</sup> 3 bedrooms **SOLD**

6E 226m<sup>2</sup> 3 bedrooms

6H. 386m<sup>2</sup> 3 bedrooms

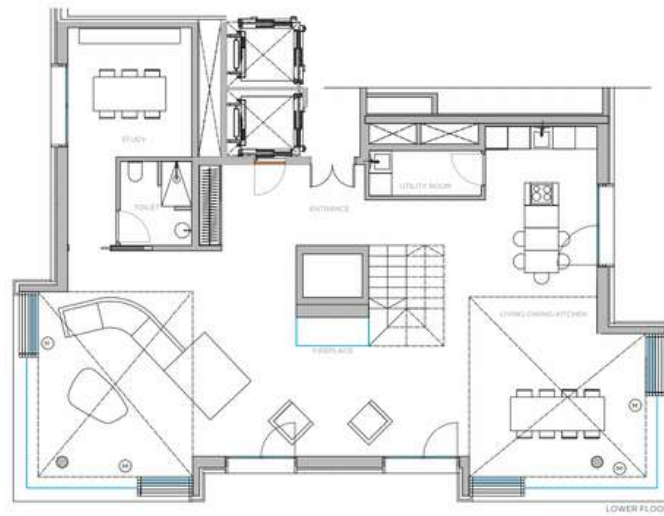
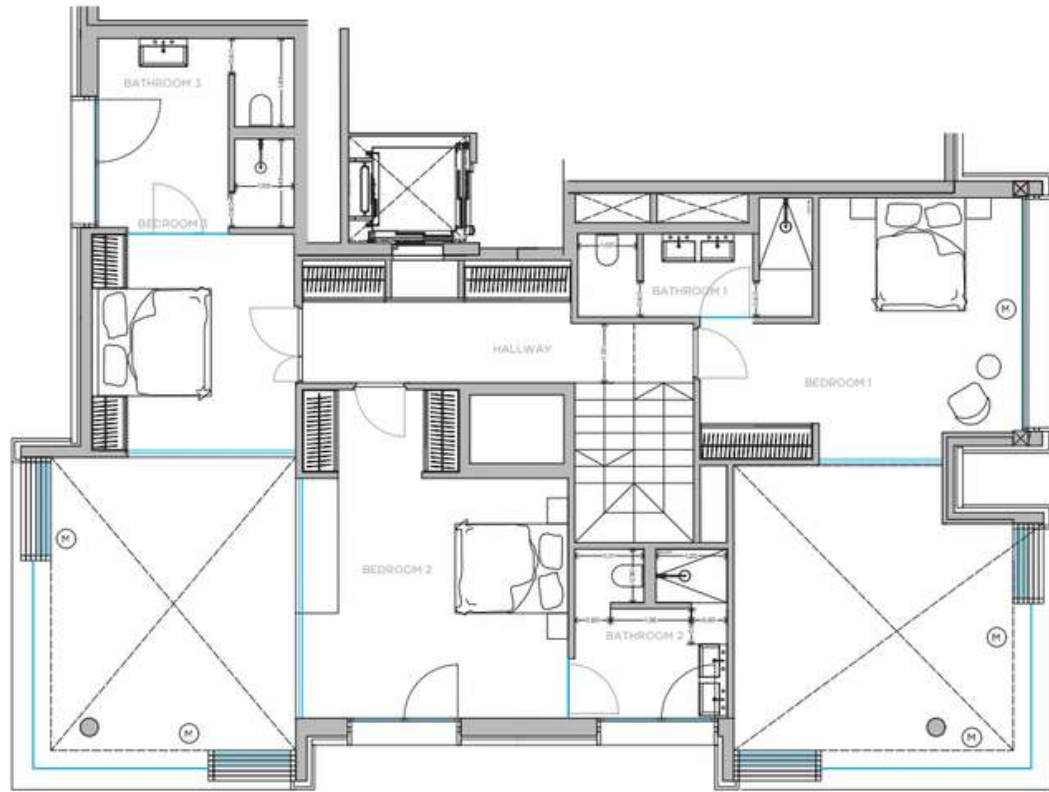
6J. 226m<sup>2</sup> 2 bedrooms **SOLD**

6K. 240m<sup>2</sup> 3 bedrooms **SOLD**

6L. 256m<sup>2</sup> 2 bedrooms



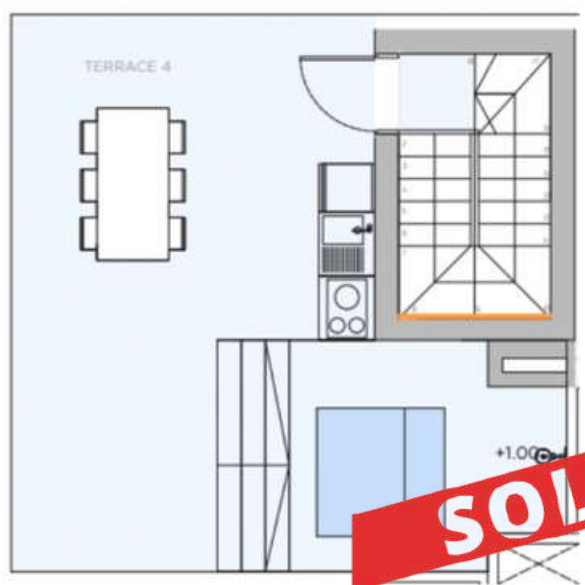
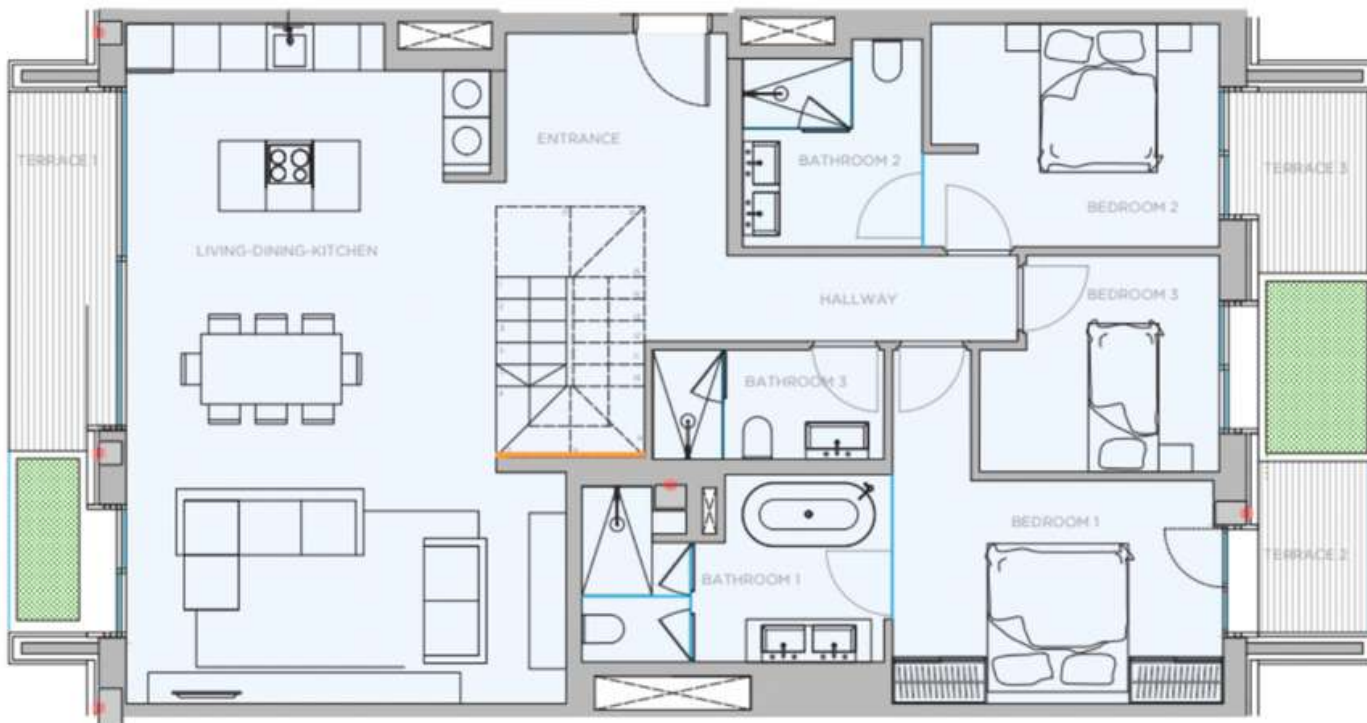
# 5AB.



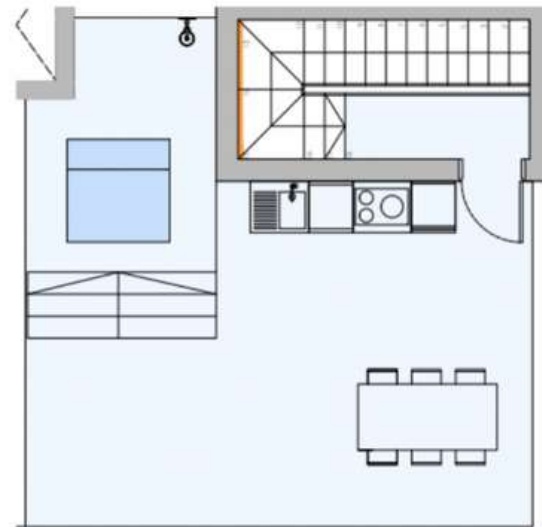
X



X



5EF.



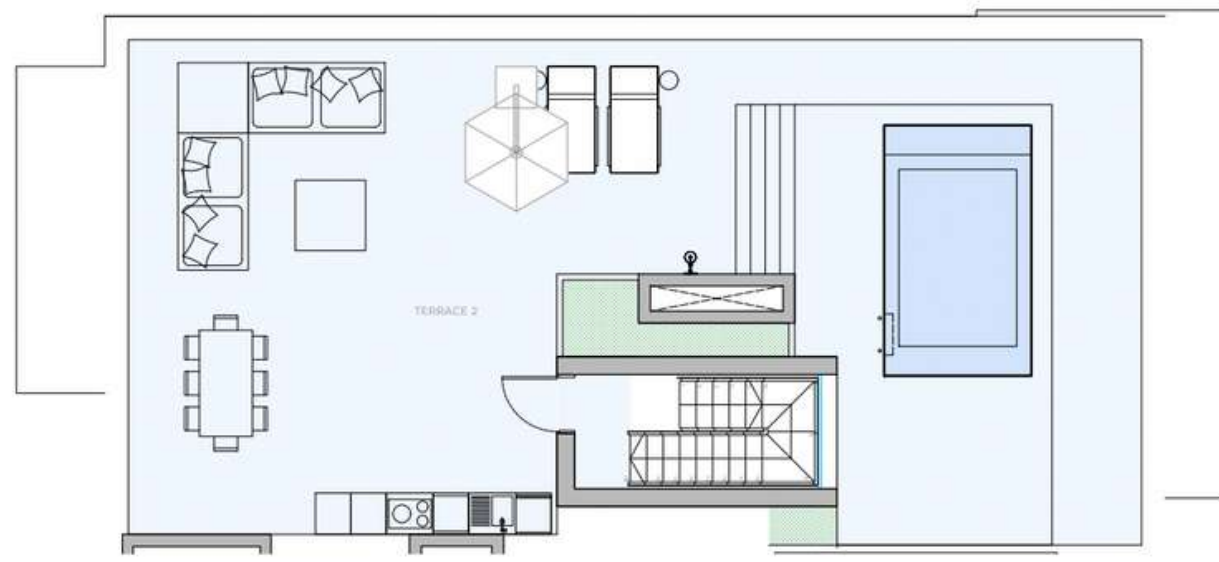
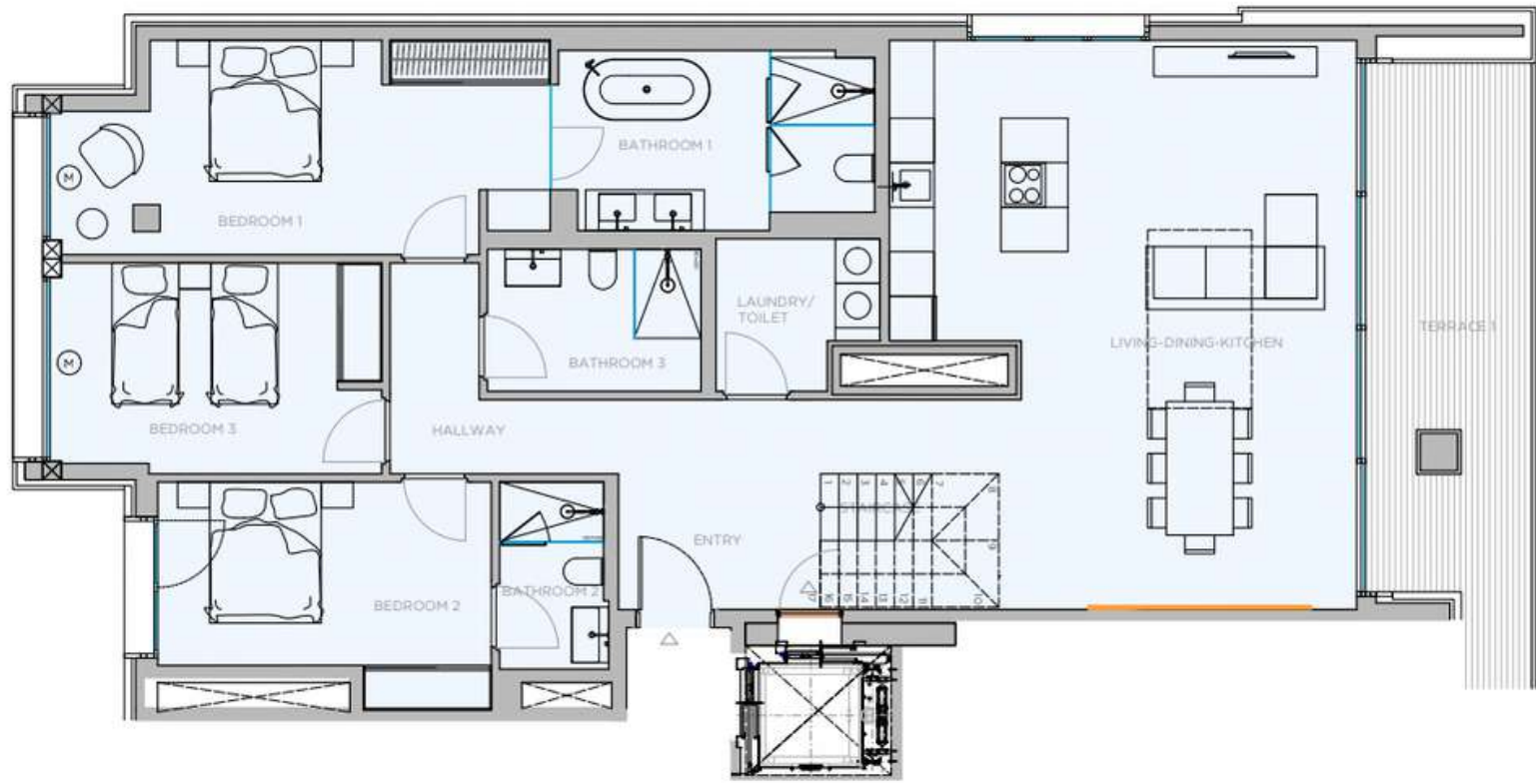
6E.

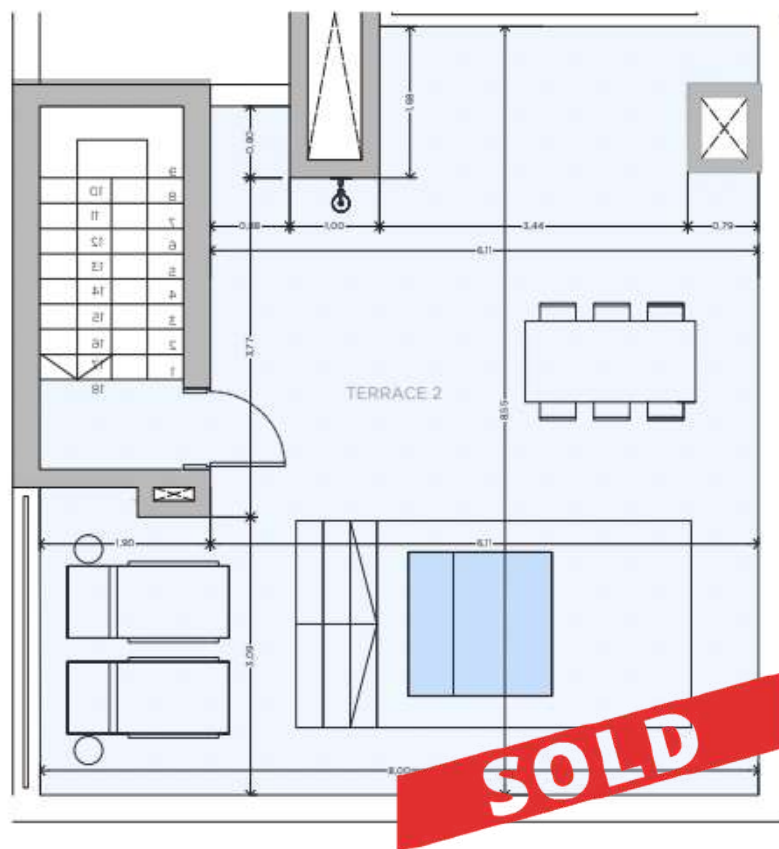
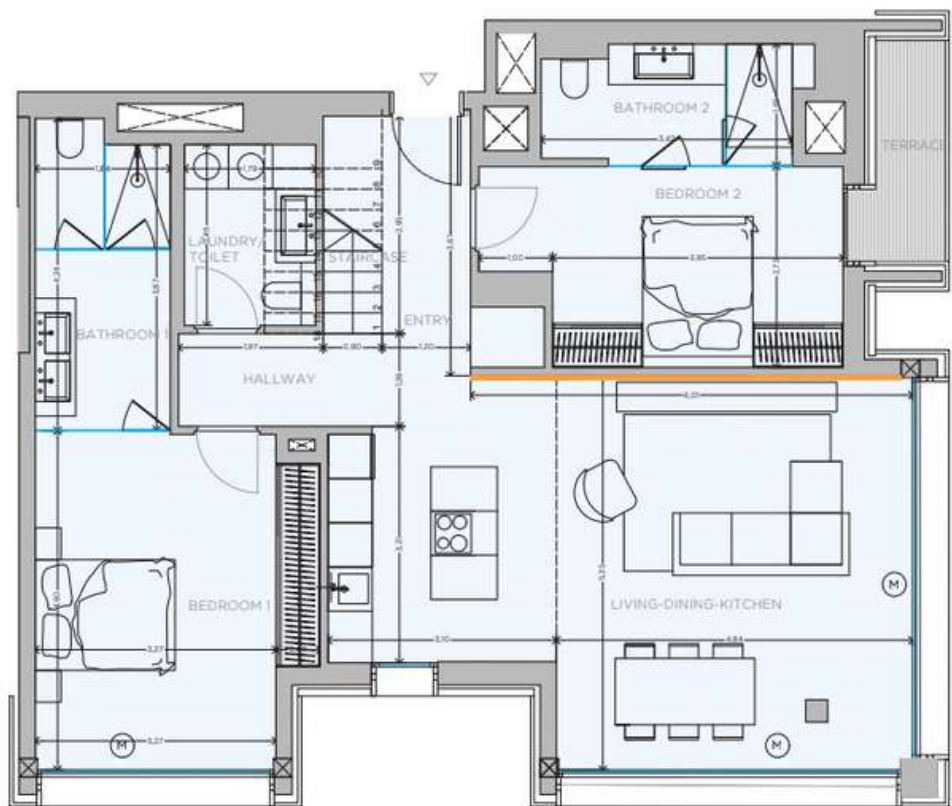


X

The XO Residences Palma

6H.



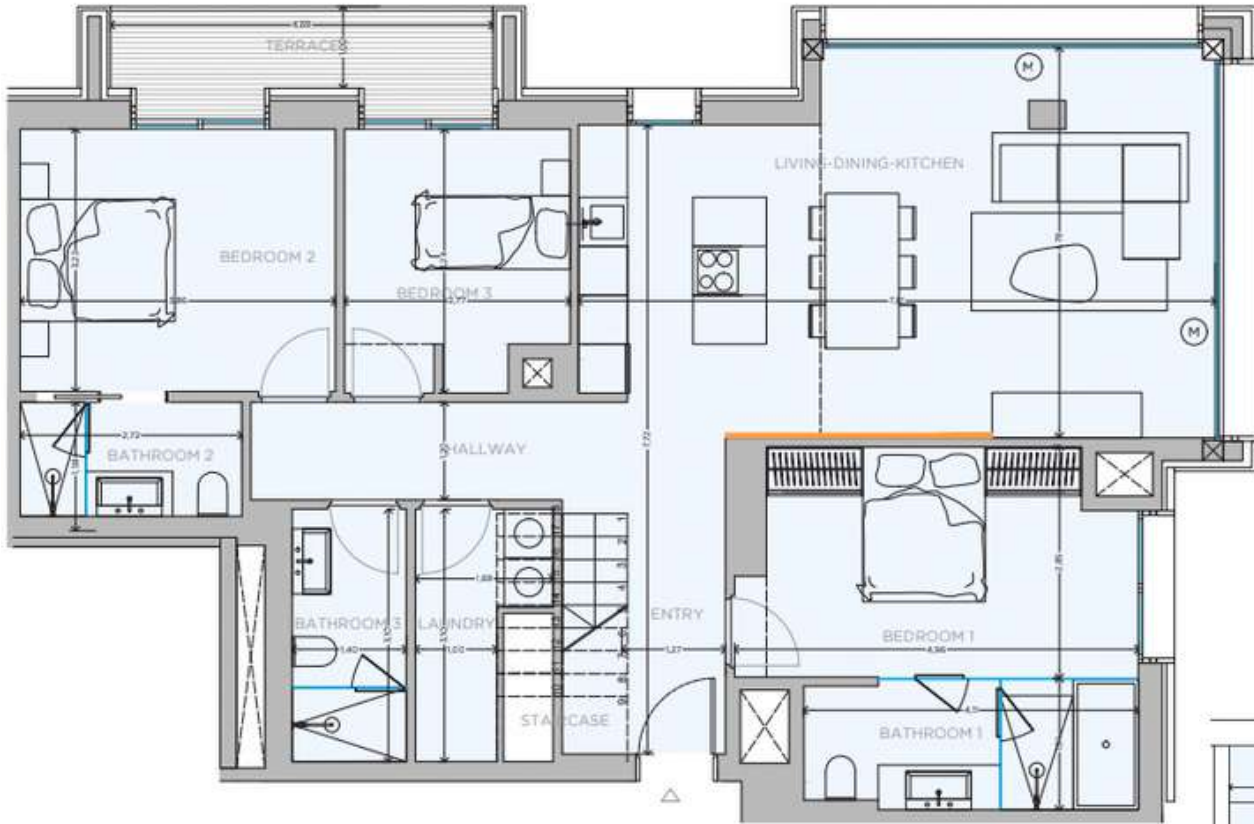


**SOLD**

6J.

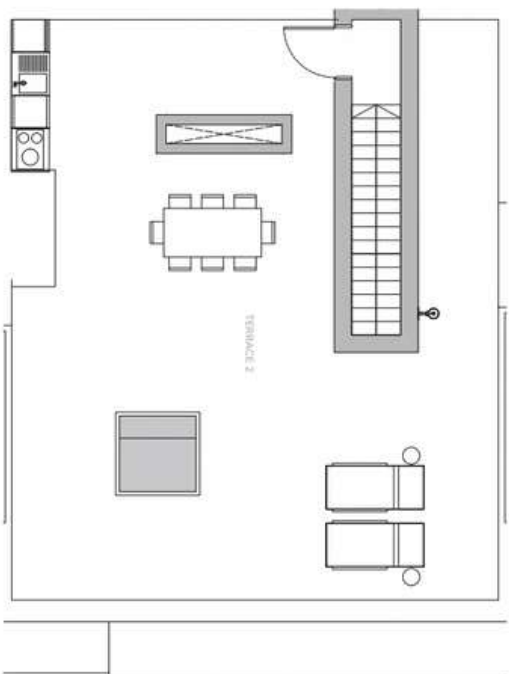


X



**SOLD**

6K.



6L.



# CONTACT US

Our dedicated sales team is ready to discuss your interest further.

+34 (0)871 858 513 / +34 (0600 982 009 / [palma@xo-jay.com](mailto:palma@xo-jay.com) / [www.xo-jay.com](http://www.xo-jay.com)

